



ORTHOPAEDIC  
— TRAUMA —  
ASSOCIATION

# OTA MEMBER FIRESIDE

Wednesday

**OCTOBER 18, 2023**

Original Seattle Convention Center (Arch Building) – 2AB  
Seattle, WA



ACCME  
ACCREDITED

2.75 AMA PRA  
Category I Credits™

Schedule and presenters  
are subject to change.



**The OTA would like to extend sincere appreciation to our  
2023 Corporate Donors for their support of the  
Annual Meeting Pre-Meeting Courses:**

**Leader Level Donors (\$20,000)**

**3M, Arthrex,  
Stryker, Zimmer Biomet**

**Advocate Level Donors (\$10,000)**

**Acumed, DePuy Synthes, Smith & Nephew**



WEDNESDAY, OCTOBER 18, 2023

# OTA MEMBER FIRESIDE (Limited to OTA Members)

Original Seattle Convention Center (Arch Building) – 2AB  
Seattle, WA

## OVERVIEW

Participants will engage in case-based discussions and are encouraged to bring their challenging or complex cases for discussion amongst the expert panel and their peers. If time allows, faculty will present their learning cases with ongoing decisional dilemmas and potentially poor outcomes. There will be an opportunity to discuss treatment options for ongoing cases as well as networking opportunities with those in attendance. Drinks and hors d'oeuvres will be served.

## LEARNING OBJECTIVES

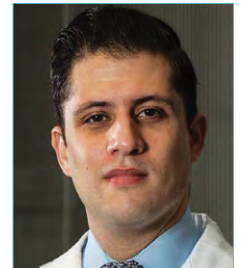
Upon successful completion of the 2023 OTA Member Fireside, participants will be able to:

1. Find new solutions to both simple and difficult clinical problems.
2. Develop new techniques to incorporate into their practice.
3. Review critical thought process for challenging cases to help avoid complications and improve outcomes.

## PROGRAM CHAIRS



Program Chairs  
**Michael T. Talerico, MD**



**Jonah Hebert-Davies, MD**

## INVITED FACULTY

Mitchell Bernstein, MD  
Julius A. Bishop, MD  
Andrew M. Choo, MD

Mark A. Lee, MD  
Milton Thomas Michael Little, MD  
Jennifer E. Hagen, MD, MS

## AGENDA

- 5:00 – 5:15 PM Networking / Introduction
- 5:15 – 6:30 PM Cases from Faculty
- 6:30 – 6:45 PM Break / Networking
- 6:45 – 8:00 PM Cases from Participants and/or Faculty



The Orthopaedic Trauma Association is accredited by the Accreditation Council for Continuing Medical Education (ACCME) to provide continuing medical education for physicians.

The Orthopaedic Trauma Association designates this live activity for a maximum of **2.75 AMA PRA Category 1 Credits™**.

Physicians should claim only the credit commensurate with the extent of their participation in the activity.

Early Bird Registration  
Until September 17.



OTA Member On/Before 9/17/23	OTA Member After 9/17/23	Non-Member On/Before 9/17/23	Non-Member After 9/17/23
------------------------------------	--------------------------------	------------------------------------	--------------------------------

Course Fee: \$100 \$200 (OTA Members Only)

## TARGET AUDIENCE

Limited to OTA Members 3-10 years in practice.