



SAVE
THE DATE

38TH ANNUAL MEETING

AND PRE-MEETING & CONCURRENT COURSES

Details & Registration
at OTA.ORG



ACCME
ACCREDITED

#OTA2022



JAPAN: 2022
GUEST NATION

2022
ANNUAL
MEETING

TAMPA, FLORIDA
OCTOBER 12 - 15, 2022



2021 RESEARCH & EDUCATION DONORS

The Orthopaedic Trauma Association gratefully acknowledges 2021 Research and Education Donors. The continued success and increased impact of the Orthopaedic Trauma Association's research and education effort is dependent upon foundation and industry support. The OTA expresses sincere appreciation to these contributors for their generous financial support.

PLATINUM AWARD DONOR (\$150,000 - \$249,999)

Smith+Nephew

SILVER AWARD DONOR (\$75,000 - \$99,999)



BRONZE AWARD DONORS (\$50,000 - \$74,999)



stryker



COPPER AWARD DONORS (\$25,000 - \$49,999)

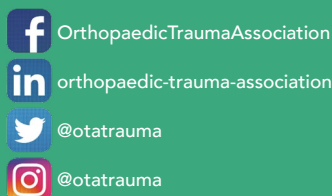


SPONSOR AWARD DONORS (\$5,000 - \$24,999)



THANK YOU!

Orthopaedic Trauma Association
9400 W Higgins Rd, Suite 305
Rosemont, IL 60018
Ph: 847.698.1631
Email: OTA@ota.org
ota.org
otaonline.org





WELCOME

Michael T. Archdeacon, MD

OTA President

Dear OTA Members and Colleagues,

Please mark your calendar for the 2022 OTA Annual Meeting taking place October 12 – 15 in Tampa, Florida. It promises to be a spectacular meeting!

The past couple of years have seen much uncertainty and many challenges. Despite those challenges, our organization has remained resilient. In 2020 we presented a fully virtual meeting. In 2021, despite several ongoing hurdles, the OTA offered an exceptionally well-executed in-person Annual Meeting rebound. While these meetings were both amazing successes, the 2022 Annual Meeting will be one you should not miss, and here's why:

- The Annual Meeting Program Committee, led by Program Chair Gerard Slobogean, MD, and Co-Chair Ed Harvey, MD, has been hard at work creating an exceptional scientific program. You will see several changes and additions to this year's program (including a shift in timing of the Annual Meeting which will begin Thursday morning at 8:00am ET, and conclude Saturday at noon ET).
- There will be more than 400 accomplished orthopaedic trauma surgeon presenters/moderators/authors sharing their expertise, experience and perspectives—all under one roof!
- It is a perfect opportunity to reconnect with colleagues you may have had little opportunity to engage with during the past couple of years.
- Downtown Tampa offers a vibrant array of nightlife, restaurants, and beautiful waterfront venues for our attendees.
- In addition to the podium presentations offering cutting edge science in the general session room, there will be a number of smaller, limited-attendance sessions offering interactive and engaging educational settings. We will continue to offer a number of pre-meeting and concurrent events including the following:

E/M and Surgical Coding Course

Pelvis and Acetabulum Course

Orthopaedic Trauma Boot Camp

Orthopaedic Trauma for PAs and NPs

Resident Comprehensive Fracture Course

Educate the Educators – Faculty Development Course

OTA Member Fireside

Young Practitioner's Forum

Basic Science Focus Forum

International Trauma Care Forum

Soft Tissue Coverage Skills Course

- And... this year's Annual Meeting will be a full-blown, better-than-ever, amazing OTA Annual Meeting!

I hope to see you in Tampa!

Sincerely,

Michael T. Archdeacon, MD

OTA President

TABLE OF CONTENTS

2021 Research & Education Donors Acknowledgment	Inside Cover
2022 OTA President's Welcome	1
2022 OTA Annual Meeting Program Chair's Welcome	3
General Information: Venue & CME Information	4
Program Committee, Target Audience & Highlights	5
President's Message and Border Lecturer	6
Symposia and Invited Faculty	7
Poster Tours, Video Tours & Receptions	8
Exhibit Hall Hours & Special Events	9
Industry Sessions: Wednesday & Thursday	10
Industry Sessions: Friday	11

PRE-MEETING & CONCURRENT COURSES:

E/M and Surgical Coding Course	12
OTA Member Fireside	13
Educate the Educators – OTA Faculty Development Course	14
Young Practitioner Forum	15
Orthopaedic Trauma Boot Camp	16
Basic Science Focus Forum	17
Orthopaedic Trauma for PAs and NPs	18
International Trauma Care Forum	19
Resident Comprehensive Fracture Course	20
Soft Tissue Coverage Skills Course	21
Pelvis and Acetabulum Course	22
OTA Video Showcase & Annual Meeting On Demand	23
Registration Rates & Deadlines	24
Visual Schedule At a Glance	25-29





WELCOME

Gerard Slobogean, MD
Annual Meeting Program Chair

Dear Colleagues,

On behalf of the OTA Program Committee and President Michael Archdeacon MD, I am pleased to invite you to the 38th Annual Meeting of the Orthopaedic Trauma Association in Tampa, Florida, October 12-15, 2022.

This year's scientific program has shifted a half-day earlier to allow you to travel home Saturday afternoon or spend more time enjoying the sunny Florida weather! The Annual Meeting will commence at 8:00 AM, Thursday October 13th, 2022 and adjourn at 12:00 PM, Saturday October 15th, 2022.

Additional noteworthy changes to the scheduling and format include: rescheduling of the 6:30 AM breakout sessions to within the normal hours of the meeting program, daily industry-sponsored breakfast, a technical tricks discussion forum, and rescheduling of Pelvis and Soft Tissue Courses to Saturday morning.

Our commitment to creating the premier research and educational program remains unchanged. Nearly 1,300 abstracts were submitted and reviewed by the Program Committee. The top 74 paper presentations have been accepted and we will continue the Thursday afternoon tradition of showcasing some of the highest quality submissions in one "Chair's Selection" session. Throughout the meeting there will also be four main symposia, 20 clinical breakout sessions, and over 200 posters in the exhibit hall.

The pre-meeting and concurrent meeting educational programs will also remain robust. In addition to the PA/NP Course, Resident Course, Basic Science Forum and International Trauma Care Forum, Wednesday's content will also include a new Faculty Education Program and continue the members-only Fireside Case Review. Similarly, attendees can continue to count on the Basic Science Forum and the International Trauma Care Forum to deliver cutting-edge translational research findings and unique multi-national treatment perspectives. Finally, we are excited to welcome Dr. David Helfet as this year's Border Lecturer.

This year's meeting will be full of renewed energy and interactive audience participation. We look forward to reuniting our entire OTA community and the return of many of our international members that were missed in 2021. Housing is now open and the preliminary program will be released soon. See you in Tampa!

Sincerely,

A handwritten signature in black ink that reads "G. Slobogean". The signature is fluid and cursive.

Gerard Slobogean, MD
Program Chair



Image courtesy of Visit Tampa Bay

GENERAL INFORMATION

VENUE

The Orthopaedic Trauma Association’s 38th Annual Meeting and all pre-meeting courses will be held at the Tampa Convention Center in Tampa, Florida. The Resident Comprehensive Fracture Course will be held across the street at the Tampa Marriott Waterside Hotel. Visit OTA.org in late May to register and make hotel reservations.

Early Bird Registration: Register by **September 11** to receive discounted rates on the Annual Meeting and each Pre-Meeting and Concurrent Course Registration.

CME

This activity has been planned and implemented in accordance with the accreditation requirements and policies of the Accreditation Council for Continuing Medical Education (ACCME). The Orthopaedic Trauma Association (OTA) is accredited by the ACCME to provide continuing medical education for physicians.



The OTA designates this live activity for a maximum of **20.5 AMA PRA Category 1 Credits™**. Physicians should claim only the credit commensurate with the extent of their participation in the activity.

PRE-MEETING & CONCURRENT COURSES (additional credits)

BASIC SCIENCE FOCUS FORUM	11.5 AMA PRA Category 1 Credits™
ORTHOPAEDIC TRAUMA BOOT CAMP	12.75 AMA PRA Category 1 Credits™
ORTHOPAEDIC TRAUMA FOR NPs and PAs	13.75 AMA PRA Category 1 Credits™
INTERNATIONAL TRAUMA CARE FORUM	11 AMA PRA Category 1 Credits™
E/M AND SURGICAL CODING COURSE	6 AMA PRA Category 1 Credits™
YOUNG PRACTITIONERS FORUM	4 AMA PRA Category 1 Credits™
PELVIS AND ACETABULUM COURSE	3.5 AMA PRA Category 1 Credits™
SOFT TISSUE COVERAGE SKILLS COURSE	4.25 AMA PRA Category 1 Credits™
EDUCATE THE EDUCATOR	7 AMA PRA Category 1 Credits™
OTA MEMBER FIRESIDE	3 AMA PRA Category 1 Credits™

CME credits are subject to change

THURSDAY-SATURDAY, OCTOBER 13-15, 2022

OTA 2022 ANNUAL MEETING

Program Committee

Gerard P. Slobogean, MD, MPH, FRCSC *Chair*

Edward J. Harvey, MD *Co-Chair*

Animesh Agarwal, MD

Andrew M. Choo, MD

Brett D. Crist, MD

Gregory J. Della Rocca, MD, PhD, FACS

Mark Lee, MD

Kelly A. Lefaivre, MD, FRCSC

Nirmal C. Tejwani, MD, FRCS

Harmeeth S. Uppal, MD, MS, FACS

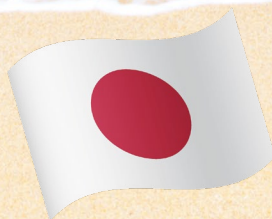
TARGET AUDIENCE

The Orthopaedic Trauma Association (OTA) Annual Meeting is for the benefit of orthopaedic trauma surgeons and related allied health care professionals.

MEETING HIGHLIGHTS

- 20 Breakout sessions including a variety of topics such as controversies in talus, ankle and plafond, osteoporotic fractures, solutions for long bone defects, soft tissue reconstruction, pelvic fracture management, and many others.
- 74 high quality podium presentations, including a session of highlight papers reflecting practice-changing research, and over 200 posters.
- Four main symposia focusing on:
 - IOTA Fracture-related Infections: Management in the Acute Setting
 - Systems Based Approaches to Vulnerable Population Healthcare
 - New Tools and Approaches in the Management of Compartment Syndrome
 - Addressing Intimate Partner Violence in Orthopedic Trauma Settings
- Industry Symposia showcasing products, demonstrating techniques and/or presenting research offered at three convenient times.

Visit ota.org for more details on papers, symposia and breakout sessions.



**JAPAN: 2022
GUEST NATION**



THURSDAY, OCTOBER 13

PRESIDENT'S MESSAGE

"Leading by Example"

Michael T. Archdeacon, MD

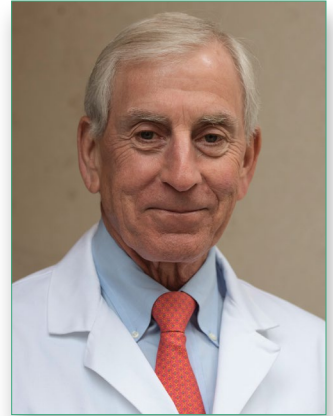
Peter J. Stern Professor and Chairman of the Department of Orthopaedic Surgery at the University of Cincinnati College of Medicine

FRIDAY, OCTOBER 14

BORDER LECTURER

"We Stand on the Shoulders of Those Before Us: A Presidential Address, Revisited"

David L. Helfet, MD



Dr. Helfet is Chief Emeritus of Orthopedic Trauma Service (OTS) for the Hospital for Special Surgery and NY Presbyterian Hospital, Professor of Orthopedic Surgery at Weill Cornell Medicine, and annually is ranked as one of Castle-Connolly's publication, "America's Top Doctors." Dr. Helfet is a world-renowned orthopedic surgeon and has served as President of the Orthopaedic Trauma Association, Chairman of AO Clinical Investigation and Documentation, member of the American Academy of Orthopaedic Surgeons, examiner of the American Board of Orthopaedic Surgery and a member of the Board of Directors of Synthes.

Dr. Helfet is extensively published and received numerous honors including the Presidential Guest and Watson-Jones Memorial Lecture of the British Orthopaedic Association, Hospital for Special Surgery Lifetime Achievement Award, and the Inaugural Award of the Society of Honorary Police Surgeons of the City of New York. He recently was inducted into the Johns Hopkins Society of Scholars, the German Society for Orthopaedics and Trauma, and serves as an Orthopedic Trauma specialist for the Fire Department of New York, the New York Police Department, and New York State Police. Dr. Helfet received a BSc in Biochemistry, M.B.Ch.B from the University of Cape Town, completed internship at Edendale Hospital in Pietermaritzburg, South Africa; surgical and orthopedic residencies at Johns Hopkins University; Trauma fellowship at the University of Bern/Insel Hospital, in Bern, Switzerland; and Sports Medicine Fellowship at UCLA. Dr. Helfet's leadership continues with numerous ongoing research studies and collaborations with multiple orthopaedic institutions. He has over 350 research publications, continues to publish in leading orthopaedic journals, and these studies are presented both national and international conferences. Dr. Helfet's research initiatives are supported by numerous grant awards.

SYMPOSIA AND INVITED FACULTY



Systems-Based Approaches to Vulnerable Population Healthcare in Orthopedic Trauma

Milton Little, MD – Moderator

Malcolm DeBaun, MD; Mark Fleming, CAPT MS USN; Damayea Hargett, MD; Toni McLaurin, MD; Kanu Okike, MD, MPH; Christian Pean, MD, MS; Charisse Sparks, MD

New Tools and Approaches in the Management of Compartment Syndrome

Ross Leighton, MD – Moderator

Michael McKee, MD; Theodore Miclau, MD; Charles Moon, MD; Prism Schneider, MD, PhD

Addressing Intimate Partner Violence in Orthopedic Trauma Settings: The EDUCATE Program

Sheila Sprague, PhD – Moderator

Gregory Della Rocca, MD, PhD; Natalie Fleming; Brad Petrisor, MD; Emil Schemitsch, MD; Prism Schneider, MD, PhD; Robert Zura, MD



INTERNATIONAL ORTHOPAEDIC TRAUMA ASSOCIATION (IOTA) SYMPOSIUM

Fracture-related Infections: Management in the Acute Setting

Theodore Miclau, MD – Moderator

Achille Contini, MD; Kodi Kojima, MD; William Obremskey, MD, MPH; Hans-Christoph Pape, MD; Michael Verhofstad, MD, PhD; Yoshinobu Watanabe, MD, PhD; Yoram Weil, MD



POSTER & VIDEO TOURS

POSTER TOURS

Thursday Lunch

Friday Lunch

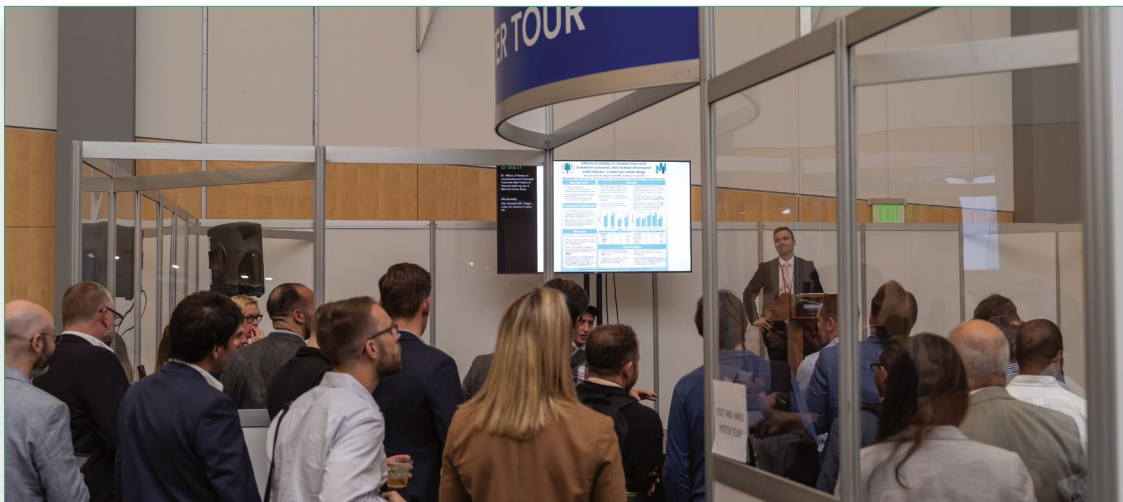
Friday Suds n' Science

VIDEO TOURS

Thursday Lunch

Friday Lunch

Friday Suds n' Science



RECEPTIONS

HAPPY HOUR - EXHIBITOR RECEPTION

Thursday, October 13

5:15 PM – 6:15 PM

Sponsored by



All attendees invited.

WELCOME RECEPTION

Thursday, October 13

6:30 PM – 8:30 PM

Splitsville – Sparkman's Wharf

INTERNATIONAL RECEPTION

Wednesday, Oct. 12

4:50 PM – 6:00 PM

PA/NP RECEPTION

Wednesday, Oct. 12

5:30 PM – 6:30 PM

KATHY CRAMER WOMEN IN TRAUMA LUNCHEON

Friday, Oct. 14

During Lunch

2022 NEW OTA MEMBER LUNCHEON

Friday, Oct. 14

During Lunch

MILITARY RECEPTION

Friday, Oct. 14

5:30 PM – 6:30 PM

EXHIBIT HALL HOURS

THURSDAY, OCTOBER 13

11:00 AM–5:00 PM

5:15 PM–6:15 PM

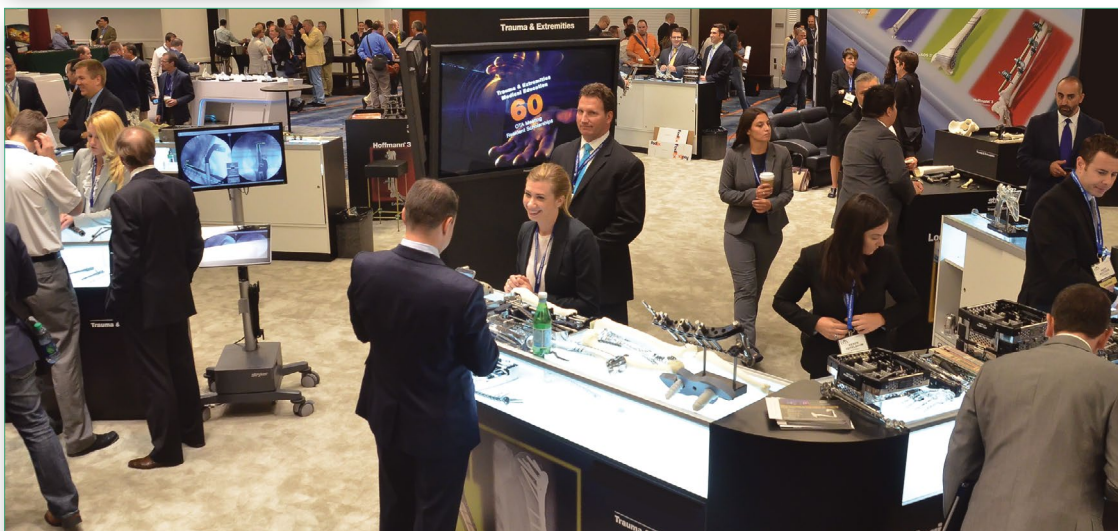
6:30 PM–8:30 PM

Exhibitors' Reception

Welcome Reception

FRIDAY, OCTOBER 14

9:00 AM–4:00 PM



SPECIAL EVENTS

TAI CHI CLASS: Wednesday, October 12, morning - no fee

VINYASA YOGA CLASS: Thursday, October 13, morning - \$20

MEDITATION CLASS: Friday, October 14, morning - no fee

WELLNESS ROOM: Wednesday - Friday, October 12 - 14

The wellness room will serve as a quiet room during the meeting. We request that this space be a technology-free quiet zone. Attendees can use this space to briefly disconnect.

TOUR DE BONE BIKE EVENT: Wednesday, October 12, 1:00 PM

Cost: Bike Rental

Special Events sponsored by **SurgeonMasters**

APP

Watch your email for release of the OTA Annual Meeting app.



Look for registration to open in June at **ota.org**.



INDUSTRY SESSIONS

WEDNESDAY, OCTOBER 12 - EVENING SESSION

stryker

THURSDAY, OCTOBER 13 - BREAKFAST SESSION

 **CurvaFix**[®]

THURSDAY, OCTOBER 13 - LUNCH SESSIONS

Smith+Nephew

 **DePuy Synthes**
THE ORTHOPAEDICS COMPANY OF *Johnson & Johnson*

 **NUVASIVE**
Specialized Orthopedics

SI-BONE[®]

*A complete listing of industry sessions
will be available on the OTA.org website.*

FRIDAY, OCTOBER 14 - LUNCH SESSIONS

Smith+Nephew

 **DePuy Synthes**
THE ORTHOPAEDICS COMPANY OF *Johnson & Johnson*

 **ZIMMER BIOMET**

Arthrex® 

3M Science.
Applied to Life.™

PBC 
BIOMED
Accelerating Medical Innovation



INDUSTRY SESSION OPPORTUNITIES OFFERED*

WEDNESDAY, OCTOBER 12 10:30 AM - Noon | 1:00 PM - 2:30 PM |
3:30 PM - 5:00 PM

THURSDAY, OCTOBER 13 7:00 AM - 7:50 AM | 12:00 PM - 12:50 PM

FRIDAY, OCTOBER 14 7:00 AM - 7:50 AM | 10:00 AM - 10:50 AM |
12:35 PM - 1:25 PM

SATURDAY, OCTOBER 15 7:00 AM - 7:50 AM

Watch the OTA website for industry session updates.

*Times may change.

Look for registration to open in June at ota.org.

PRE-MEETING AND CONCURRENT COURSES

WEDNESDAY, OCTOBER 12

TAKE THE TRAUMA OUT OF TRAUMA CODING (E/M AND SURGICAL CODING)



Sarah Wiskerchen, MBA, CPC
Senior Consultant
KarenZupko and Associates, Inc.



Brian P. Cunningham, MD
Course Chair

OVERVIEW

Sarah Wiskerchen from KarenZupko & Associates, Inc. will break down and simplify the E/M documentation requirements using tools specifically crafted to ease the transition. The latest on telehealth and best practices will be examined, in addition to surgical coding issues important to trauma surgeons. Fracture care, staged procedures, bone grafts, and debridement will be covered with examples. Sarah will explain the correct reporting of PA/NP and other services that are the focus of audits and take backs. Attend a coding course developed specifically for orthopaedic trauma surgeons and their staff.

Each attendee will receive a copy of KZA's popular workbook full of concrete examples and practical tools for documentation and audit. Attend this course and streamline your coding. Take advantage of this terrific value!

ABOUT THE SPEAKER

Sarah is a nationally recognized orthopaedic consultant and speaker, who succeeds in helping clients identify both the risk and opportunity in coding, reimbursement, and operational systems.

Sarah is an instructor for the AAOS annual coding workshop series on CPT and ICD-10 and has presented at annual meetings for numerous state societies and professional organizations, including ASSH, OTA, and AOAO. In addition, Sarah has provided coding education and consultation for a variety of academic, employed and private practices across the nation. Her comprehensive knowledge of complex coding concepts, including ICD-10-CM codes and surgical modifiers specific to hand, shoulder, podiatry, hip, knee, and total joint procedures make her a sought-after educator, trainer and speaker.

Sarah holds a Master of Business Administration from the University of St. Thomas in St. Paul, Minnesota, and a Bachelor's degree in business and finance from the University of Wisconsin-River Falls. She is an AAPC-certified coder.

6 AMA PRA Category 1 Credits™ will be awarded for your participation at this activity.

WEDNESDAY, OCTOBER 12

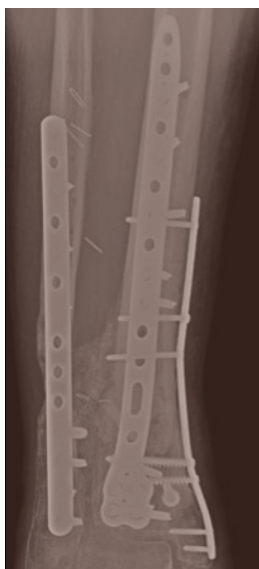
OTA MEMBER FIRESIDE

(For OTA Members)



Program Chairs
Samir Mehta, MD

Jonah Hebert-Davies, MD



OVERVIEW

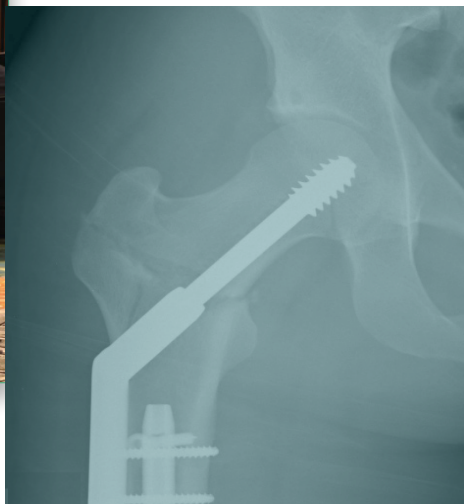
Participants will engage in case-based discussions and are encouraged to bring their challenging or complex cases for discussion amongst the expert panel and their peers. If time allows, faculty will present their learning cases with ongoing decisional dilemmas and potentially poor outcomes. There will be an opportunity to discuss treatment options for ongoing cases as well as networking opportunities with those in attendance. Drinks and hors d'oeuvres will be served.

TARGET AUDIENCE

Limited to OTA Members 3-10 years in practice.



3 AMA PRA Category 1 Credits™ will be awarded for your participation at this activity.



Look for registration to open in June at ota.org.

WEDNESDAY, OCTOBER 12

NEW!

EDUCATE THE EDUCATORS - OTA FACULTY DEVELOPMENT COURSE

(For OTA Members – Registration limited to 30 attendees.)



Program Chairs
Samir Mehta, MD

Sandra Jarvis-Selinger, PhD



OVERVIEW

Medicine requires all physicians to be educators, and find effective and efficient ways to share information with learners and patients. Teaching the discipline of orthopedic surgery to learners, for example, depends on the physician assuming the role of educator and educational leader. The amount of clinical knowledge to impart and technical skill to train are ever increasing as the time residents spend learning is decreasing. This course emphasizes the needs of adult learners and the techniques and leadership skills necessary to develop effective learning environments, as well as acquire or hone skills to be an effective educator for residents, fellows, medical students, advanced practice providers, and patients. The goal of this program is to foster and promote the pursuit of excellence in orthopaedic education.

The OTA's Educate the Educators Faculty Development Program will be a three-module course spread over three years held as a pre-course event prior to the OTA Annual Meeting. Completion of all three modules of the course (in any order over any period of time) will result in a certificate noting successful completion of the modules.

The course will cover topics focusing on the educator, the learner, and the program. Topics will include feedback, clinical reasoning, teaching perspectives inventory, career planning, rotation specific objectives, assessment of learners, asking good questions, generational issues, problem residents, curriculum design, and teaching in different contexts.

YEAR 1*

About the Educator –
Teaching Perspectives
Inventory

About the Learner –
Feedback/Onboarding,
Setting Expectations,
Generational Issues,
Problem Residents

About the Program –
Teaching Contexts (OR,
Clinic, small group seminars,
large group lectures, etc)

YEAR 2*

About the Educator –
Identity as a Teacher

About the Learner –
Clinical Reasoning/Asking
Good Questions

About the Program –
Rotation Specific
Objectives and Program
Identity

YEAR 3*

About the Educator –
Career Planning

About the Learner –
Assessment of Learners/
Problem Residents

About the Program –
Curriculum Design

*Subject to modification

7 AMA PRA Category 1 Credits™ will be awarded for your participation at this activity.

WEDNESDAY, OCTOBER 12



YOUNG PRACTITIONER FORUM

– Preparing for Your Future

Course Chair
Michael S. Kain, MD

Boris Zelle, MD
Co-Chair



OVERVIEW

The purpose of the Young Practitioners Forum is to provide programming targeted towards senior residents, fellows, and orthopaedic surgeons developing an orthopaedic trauma practice. Discussions and lectures will focus on nontraditional topics not typically taught in training. There will be an emphasis on providing insight into how to develop professionally, clinically, and personally. The target audience will be provided advice and pearls from experienced surgeons, in a friendly environment, to help them transition into practice and to achieve the professional goals that are important to them. This relaxed setting will also allow participants to network and to meet leaders and rising stars in the world of orthopaedic trauma.

TARGET AUDIENCE

This course is designed for orthopaedic residents, fellows, and early career orthopaedic surgeons planning and developing a career in orthopaedic trauma.



4 AMA PRA Category 1 Credits™ will be awarded for your participation at this activity.

Look for registration to open in June at ota.org.

WEDNESDAY-THURSDAY, OCTOBER 12-13



ORTHOPAEDIC TRAUMA BOOT CAMP

Program Chairs

Michael Maceroli, MD

Richard Yoon, MD



OVERVIEW

The 2022 OTA Bootcamp Course offers busy surgeons an intense review of the current state of the art of fracture management. We bring together thought leaders in Orthopaedic Trauma for case-based presentations and lab sessions that illustrate the major issues related to the management of each fracture. This course is designed for busy surgeons who treat fractures as part of their practice. The Boot Camp Course offers surgeons the chance to add practical applications to their practice and have one's most pressing questions answered.

TARGET AUDIENCE

This course is intended for the practicing orthopaedic surgeon who takes emergency room or trauma call. Current techniques in orthopaedic care will be stressed with attention to appropriate soft tissue management and up-to-date implant selection. Case discussions will be used for interactive learning and audience participation.

12.75 AMA PRA Category 1 Credits™ will be awarded for your participation at this activity.



ON THE AGENDA

LECTURES AND CASE PRESENTATIONS

- Upper Extremity
- Pelvis & Hip
- Lower Extremity
- Knee and Leg
- Foot & Ankle
- Infection
- Nonunion/Malunion
- Getting Through the Night

LABS

- Proximal Humerus Plating
- Distal Humerus Plating
- Pilon Plating
- Bicondyar Plating
- Semi-Extended Tibial Nailing

WEDNESDAY-THURSDAY, OCTOBER 12-13



BASIC SCIENCE FOCUS FORUM

Basic Science Committee

Aaron Nauth, MD *Chair*

Andrew R. Evans, MD, FACS

Justin Haller, MD

Michael W. Hast, PhD

Christopher Lee, MD

Saam Morshed, MD, PhD

Emil H. Schemitsch, MD

Andrew Trenholm, MD

John J. Wixted, MD

OVERVIEW

The 2022 Basic Science Focus Forum Course (BSFF) is directed towards orthopaedic surgeons with an interest in the basic science of orthopaedic trauma and how it relates to or impacts their practice. Basic science researchers will also obtain valuable knowledge about translational opportunities and how their research has the potential to change orthopaedic care. This course will involve 5 main symposia specifically designed to 'bridge the gap' between basic science and clinical practice, in addition to approximately 30 original research papers from the cutting edge of basic science research.

The attendees of the BSFF program will also have the opportunity to join together with the attendees at the International Trauma Care Forum for a special joint symposium. This combined session has proved to be a great collaboration and a chance to discuss ideas with our international colleagues.



SYMPOSIA

Combined Session with International Trauma Forum:
Distal Femur Fractures:
Basic Science and International Perspectives

Immune Modulation of Fracture Healing and Response to Polytrauma

Amputation and Prosthetics:
The Latest Advances and Basic Science Perspectives

SRI Collaborative Session:
Animal Models

Other Symposia Topics Include:
Geriatric Trauma
Biomechanics of Fracture Healing

TARGET AUDIENCE

Academic orthopaedic surgeons, community surgeons with an interest in clinically relevant basic science, basic and clinical researchers, residents and fellows will benefit most from this Basic Science Focus Forum.

INTERNATIONAL INDUSTRY LUNCH SESSION

WEDNESDAY, OCTOBER 12

Sponsored by: **Zimmer Biomet**

Approaches & Techniques for Addressing Severely Comminuted Elbow and Distal Radius Fractures and Associated Complications

11.5 AMA PRA Category 1 Credits™ will be awarded for your participation at this activity.

Look for registration to open in June at ota.org.

WEDNESDAY-THURSDAY, OCTOBER 12-13



ORTHOPAEDIC TRAUMA FOR PAs AND NPs

Program Chairs

Michael T. Talerico, MD

Ryan M. Wilson, MPAS



OVERVIEW

The 2022 OTA PA/NP Orthopaedic Trauma Course offers PAs and NPs an exciting look at current state of the art fracture management. The course brings together leaders in Orthopaedic Trauma for lectures, case-based presentations, and lab sessions that illustrate the best practices in fracture care. The course discussions also include best practices for integration, billing, and coding for PAs and NPs in Orthopaedics.

TARGET AUDIENCE

This course is intended for PAs and NPs who are early on in their careers or experience of treating orthopaedic trauma while practicing in general orthopaedics, taking acute orthopaedic call with inpatient/outpatient or caring for orthopaedic injuries in ER/UC/General Trauma services. ALL levels of experience PAs and NPs are invited to register and attend.

The course is not intended to be taken on a recurring/annual basis. Instead the course serves as a foundation to progress to other OTA Course offerings like the Resident Comprehensive Fracture and Advanced Trauma Courses, Boot Camp, and the OTA Annual Meeting.

13.75 AMA PRA Category 1 Credits™ will be awarded for your participation at this activity.

ON THE AGENDA

CASE PRESENTATIONS

- Dysvascular Extremities/ Mangled Limb
- Clinical Pearls for New Orthopaedic Trauma Providers
- Foot and Ankle Injuries: Urgencies vs Outpatient Injuries
- The Other Side: Being the Patient

SKILLS LABS

- Femoral Nail
- Splinting Skills
- Distal Humerus Plating
- Suturing

KEY TALKS

- Compartment Syndrome
- Osteoporosis
- Fracture Healing
- Fixation Theories
- Common Pediatric Fractures
- Musculoskeletal Infection
- Amputations



WEDNESDAY-THURSDAY, OCTOBER 12-13



INTERNATIONAL TRAUMA CARE FORUM

Program Committee

Theodore Miclau III, MD *Chair*

Hans-Christoph Pape, MD, FACS

Co-Chair

Paul S. Whiting, MD *Co-Chair*

Zsolt J. Balogh, MD, PhD

Victor de Ridder, MD, PhD, MBA

Carla Smith, MD



OVERVIEW

The International Trauma Care Forum is focused on gathering trauma surgeons from across the globe together to exchange ideas and knowledge on the differences in treatment from a global perspective. This one and a half day session is comprised of 30 papers and 6 main symposia, which include the International Orthopaedic Trauma Association symposia.

Attendees of the International Trauma Care Forum will collaborate with the attendees of the Basic Science Focus Forum and exchange ideas during their joint session symposium. This combined session has proved to be a great way to come together to discuss ideas with basic science researchers.

SYMPOSIA

- International Orthopaedic Trauma Association (IOTA):
Fragility Fractures: Current Treatment Controversies
- *Combined Session with Basic Science:* Post-traumatic Distal Femur Fractures: Basic Science and International Perspectives
- Topical Symposia:
Upper Extremity
Geriatrics
Lower Extremity
- A Topical Symposium Featuring Speakers from our Guest Nation of Japan



TARGET AUDIENCE

The Orthopaedic Trauma Association (OTA) International Trauma Care Forum is for the benefit of orthopaedic trauma surgeons and related allied health care professionals with an interest in international trauma healthcare.

INTERNATIONAL INDUSTRY LUNCH SESSION

WEDNESDAY, OCTOBER 12

Sponsored by: **Zimmer Biomet**

Approaches & Techniques for Addressing Severely Comminuted Elbow and Distal Radius Fractures and Associated Complications

11 AMA PRA Category 1 Credits™ will be awarded for your participation at this activity.

WEDNESDAY-FRIDAY, OCTOBER 12-14



RESIDENT COMPREHENSIVE FRACTURE COURSE

Course Chair
Holly Pilson, MD

Arun Aneja, MD, PhD
Co-Chair



OVERVIEW



The Resident Comprehensive Fracture Course will be presented in separate small group modules, with 22-24 residents and 5 experienced faculty educators per module.

The modules will have a rapid-fire series of mini-lectures, an extensive open case-based discussion, video demonstrations of techniques, and hands-on skills lab exercises. Modules will cover fundamental principles of fracture care distributed among topics: articular, diaphyseal, foot and ankle, geriatrics, pediatrics, pelvis/polytrauma/acetabulum, upper extremity and spine.

This course offers pre-course educational on-demand video materials. Details will be sent with registration confirmation as well as an online basic science pre-test and an onsite clinical post test.

TARGET AUDIENCE

This course is targeted for PGY1 - PGY3's. Others who feel they will benefit will not be excluded. Attendance is limited so early registration is recommended.



MODULE TOPICS

- Articular
- Diaphyseal
- Foot and Ankle
- Geriatrics
- Pediatrics
- Pelvis, Polytrauma and Acetabulum
- Upper Extremity
- Spine

SATURDAY, OCTOBER 15



SOFT TISSUE COVERAGE SKILLS COURSE

Course Chair
James A. Blair, MD

Arun Aneja, MD
Co-Chair

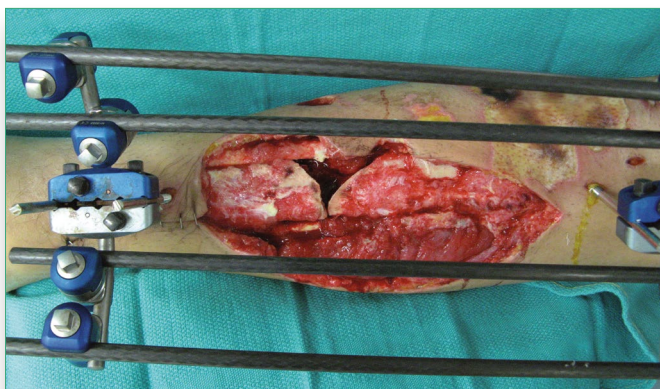


OVERVIEW *(For OTA Members)*

Limited to OTA Members, this Soft Tissue Coverage Skills Course is a hands-on skills lab (cadaver) to teach orthopaedic trauma surgeons techniques in soft tissue coverage. Techniques will focus on skin augmentation and rotational flap coverage for the lower extremity that can be translated into practice. All faculty are Orthopaedic Trauma Surgeons that are active members of the OTA with extensive experience in soft tissue coverage. Entire course takes place in a skills lab.

TARGET AUDIENCE

OTA Members: Fellows
or Early to Mid-Career
Surgeons (0-15 Years)



4.25 AMA PRA Category 1 Credits™ will be awarded for your participation at this activity.

Look for registration to open in June at ota.org.

SATURDAY, OCTOBER 15



PELVIS AND ACETABULUM COURSE

Course Chair
Christopher Lee, MD

Miguel Daccarett, MD
Co-Chair



OVERVIEW

As a result of participation in this activity, participants will be able to gain a better understanding of providing care for complex pelvic and acetabular surgical patients obtained through case presentations, discussions, debates and summary “take home points” presentations.

TARGET AUDIENCE

Orthopaedic trauma surgeons who wish to gain further insight into the management of complex pelvic and acetabular fractures. Participants will engage in a series of small group case-based discussions designed to facilitate an interactive discussion led by an experienced pelvic / acetabular surgeon.



TOPICS

PELVIC RING

- Resuscitation
- Assessment of Stability
- Revision or Malunion or Nonunion

ACETABULUM

- Surgical Approaches
- Surgical Hip Dislocation

TIPS & TRICKS



3.5 AMA PRA Category 1 Credits™ will be awarded for your participation at this activity.

View this year's accepted video submissions of new or evolving techniques during Video Tours in the Exhibit Hall.



OTA 2022 ANNUAL MEETING *ON DEMAND*

**CAN'T ATTEND EVERY SESSION?
WATCH OR RE-WATCH SESSIONS ANYTIME, ANYWHERE!**

Order the Gold Registration package and receive exclusive attendee discounts on OTA Annual Meeting *On Demand*.

With so many sessions occurring simultaneously, your *On Demand* program gives you the opportunity to participate in the best of OTA key presentations, helping you maximize the investment you've made in attending the live meeting.

OTA Annual Meeting *On Demand* features online access approximately 25 hours of the most watched break-outs, pre-meeting events and podium presentations from any computer or mobile device.

REGISTRATION RATES

ON DEMAND GOLD REGISTRATION (Annual Meeting Registration AND Annual Meeting On Demand)		On/Before 9/11/22	After 9/11/22
OTA Member		\$ 450	\$ 550
Non-member		\$ 1050	\$ 1150
Non-member Medical Resident, Fellow		\$ 550	\$ 650
Non-member Health Care Personnel		\$ 600	\$ 700

ANNUAL MEETING (only) REGISTRATION		On/Before 9/11/22	After 9/11/22
OTA Member		\$ 300	\$ 400
Non-member (Incl. MD, DO, MBBS, etc.)		\$ 850	\$ 950
Non-member Medical Resident, Fellow		\$ 450	\$ 550
Non-member Health Care Personnel (incl. NP, PA, AH, PhD, etc.)		\$ 500	\$ 600

WEDNESDAY, OCTOBER 12

	OTA Member On/Before 9/11/22	OTA Member After 9/11/22	Non-Member On/Before 9/11/22	Non-Member After 9/11/22
E/M and Surgical Coding Course	\$ 300	\$ 400	\$ 400	\$ 500
OTA Member Fireside	\$ 100	\$ 150	(OTA Members Only)	
OTA Faculty Development Course	\$ 275	\$ 375	(OTA Members Only)	
Young Practitioners Forum	\$ 75	\$ 100	\$ 75	\$ 100
Orthopaedic Trauma Boot Camp	\$ 275	\$ 375	\$ 400	\$ 500
Basic Science Focus Forum	\$ 250	\$ 350	\$ 350	\$ 450
Orthopaedic Trauma for PAs and NPs	\$ 300	\$ 400	\$ 450	\$ 550
International Trauma Care Forum	\$ 150	\$ 200	\$ 200	\$ 250
Residents Comprehensive Fracture Course	\$ 725	\$ 725	\$ 725	\$ 725
International Reception	Free	Free	Free	Free

THURSDAY, OCTOBER 13

Welcome Reception	Free	Free	Free	Free
-------------------	------	------	------	------

FRIDAY, OCTOBER 14

Military Reception	Free	Free	Free	Free
New Member Luncheon	Free	Free	Free	Free
Women in Orthopaedic Trauma Luncheon	Free	Free	Free	Free

SATURDAY, OCTOBER 15

Pelvis and Acetabulum Course	\$ 200	\$ 300	\$ 300	\$ 400
Soft Tissue Coverage Skills Course	\$ 250	\$ 350	(OTA Members Only)	

RESERVED SESSIONS (No additional charge)

INDUSTRY SYMPOSIA (Tickets Required)
See pages 10 & 11.
Online registration will have titles and descriptions.

Please register for only one (1) Industry Session per day.
Indicate your selections during registration.

POSTER & VIDEO TOURS (Tickets Required)
See page 8.

Please register for only one (1) Poster or Video Tour Session per day.
Indicate your selections during registration.

SPECIAL EVENTS (Tickets Required)

TAI CHI CLASS	
Wednesday (morning)	\$ 0
VINYASA YOGA CLASS	
Thursday (morning)	\$ 20
MEDICATION CLASS	
Friday (morning)	\$ 0
WELLNESS ROOM	
Wednesday - Friday	\$ 0
TOUR de BONE BIKE EVENT	
Wednesday, 1:00 PM – Cost: Bike Rental	

Early Bird Registration
Until September 11.



**REGISTER ONLINE
BEFORE
OCTOBER 11TH**
to Receive Email
with Barcode for
Express Badge
Pick-Up

SCHEDULE AT A GLANCE

THURSDAY, OCTOBER 13

EST	General Session	Registration	Speaker Ready	Premeeting Courses	Industry Sessions	Receptions	Exhibit Hall	Video & Poster Tours	Breakout Sessions	
6:00 AM										
6:15 AM										
6:30 AM		Registration <i>West Registration Area</i>	Speaker Ready Room <i>Central Hall</i>							
6:45 AM										
7:00 AM										
7:15 AM										
7:30 AM										
7:45 AM										
8:00 AM										
8:15 AM										
8:30 AM										
8:45 AM										
9:00 AM										
9:15 AM										
9:30 AM										
9:45 AM										
10:00 AM										
10:15 AM										
10:30 AM										
10:45 AM										
11:00 AM										
11:15 AM										
11:30 AM										
11:45 AM										
12:00 PM										
12:15 PM										
12:30 PM										
12:45 PM										
1:00 PM										
1:15 PM										
1:30 PM										
1:45 PM										
2:00 PM										
2:15 PM										
2:30 PM										
2:45 PM										
3:00 PM										
3:15 PM										
3:30 PM										
3:45 PM										
4:00 PM										
4:15 PM										
4:30 PM										
4:45 PM										
5:00 PM										
5:15 PM										
5:30 PM										
5:45 PM										
6:00 PM										
6:15 PM										
6:30 PM										
6:45 PM										
7:00 PM										
7:15 PM										
7:30 PM										
7:45 PM										
8:00 PM										

SCHEDULE AT A GLANCE

THURSDAY, OCTOBER 13

EST	General Session	Registration	Speaker Ready	Premeeting Courses	Industry Sessions	Receptions	Exhibit Hall	Video & Poster Tours	Breakout Sessions		
6:00 AM											
6:15 AM											
6:30 AM											
6:45 AM											
7:00 AM											
7:15 AM											
7:30 AM											
7:45 AM											
8:00 AM											
8:15 AM											
8:30 AM	Basic Science Focus Forum (BSFF) <i>Ballroom D</i>	International Trauma Care Forum (ITCF) <i>116 & 117</i>	Boot Camp <i>Ballroom A</i>	PA/NP <i>Ballroom B</i>							
8:45 AM											
9:00 AM											
9:15 AM											
9:30 AM											
9:45 AM											
10:00 AM											
10:15 AM											
10:30 AM											
10:45 AM											
11:00 AM											
11:15 AM											
11:30 AM											
11:45 AM											
12:00 PM											
12:15 PM											
12:30 PM											
12:45 PM											
1:00 PM											
1:15 PM											
1:30 PM											
1:45 PM											
2:00 PM											
2:15 PM											
2:30 PM											
2:45 PM											
3:00 PM											
3:15 PM											
3:30 PM											
3:45 PM											
4:00 PM											
4:15 PM											
4:30 PM											
4:45 PM											
5:00 PM											
5:15 PM											
5:30 PM											
5:45 PM											
6:00 PM											
6:15 PM											
6:30 PM											
6:45 PM											
7:00 PM											
7:15 PM											
7:30 PM											
7:45 PM											
8:00 PM											

Industry Sessions Breakfast

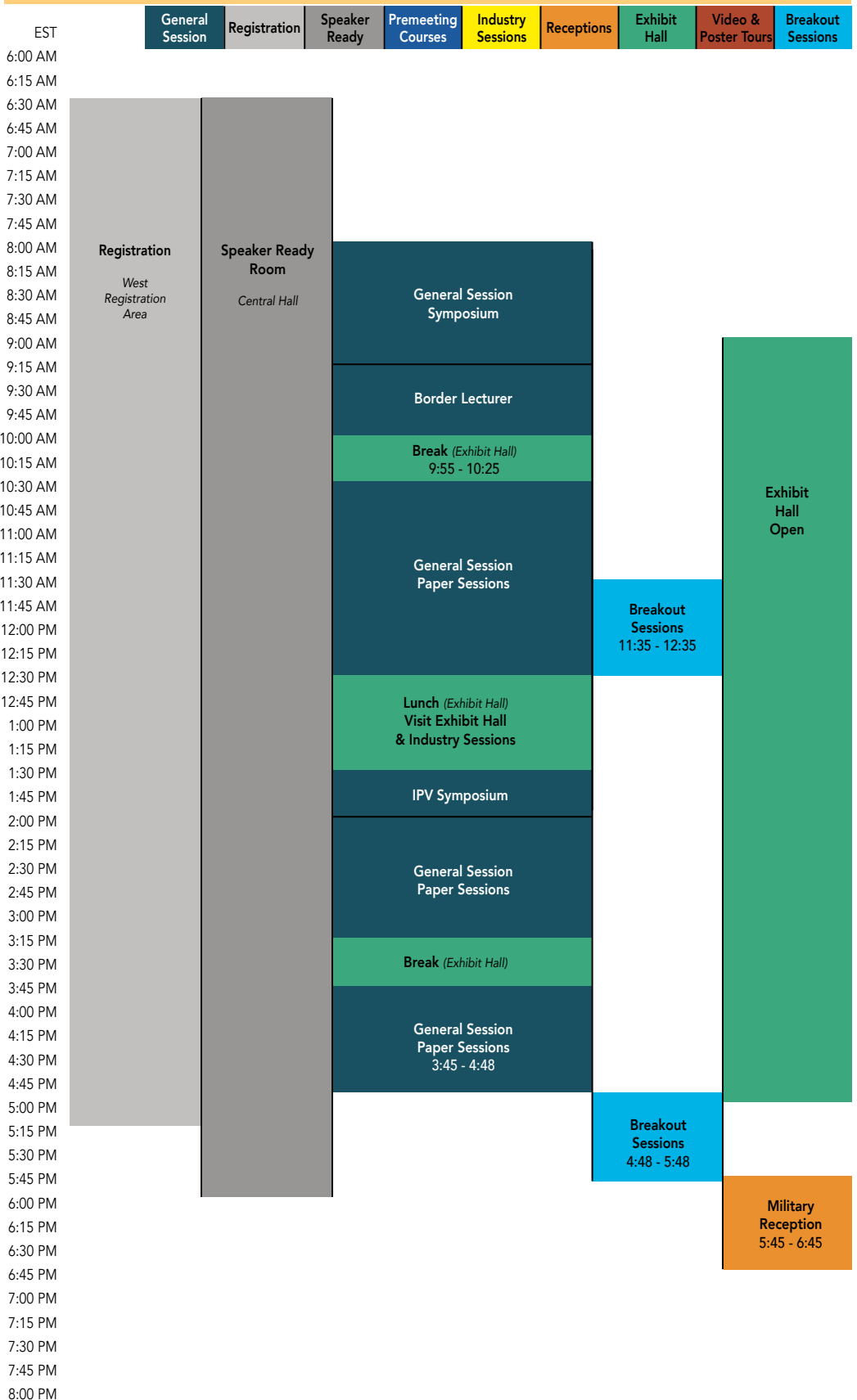
Industry Sessions Lunch

Video & Poster Tours

OTA
Welcome Reception
 6:30 - 8:30
Splitsville Southern and Social – Sparkman's Wharf

SCHEDULE AT A GLANCE

FRIDAY, OCTOBER 14



SCHEDULE AT A GLANCE

FRI., OCT. 14		SATURDAY, OCTOBER 15								
EST	General Session	Registration	Speaker Ready	Premeeting Courses	Industry Sessions	Receptions	Exhibit Hall	Video & Poster Tours	Breakout Sessions	
6:00 AM										
6:15 AM										
6:30 AM										
6:45 AM										
7:00 AM										
7:15 AM	Industry Sessions Breakfast									
7:30 AM										
7:45 AM										
8:00 AM			Registration	Speaker Ready Room				Industry Sessions Breakfast		
8:15 AM			West Registration Area	Central Hall	General Session Symposium					
8:30 AM										
8:45 AM										
9:00 AM										
9:15 AM							Traveling Fellowship			
9:30 AM							Break (GS Foyer)			
9:45 AM										
10:00 AM							General Session Podium Sessions		Breakout Sessions	
10:15 AM	Industry Sessions Concurrent									
10:30 AM										
10:45 AM										
11:00 AM										
11:15 AM										
11:30 AM										
11:45 AM					General Session Paper Sessions					
12:00 PM										
12:15 PM										
12:30 PM										
12:45 PM	Industry Sessions Lunch									
1:00 PM	12:35 - 1:25	Video & Poster Tours								
1:15 PM		12:35 - 1:35								
1:30 PM										
1:45 PM										
2:00 PM										
2:15 PM										
2:30 PM										
2:45 PM										
3:00 PM										
3:15 PM										
3:30 PM										
3:45 PM										
4:00 PM										
4:15 PM										
4:30 PM										
4:45 PM										
5:00 PM										
5:15 PM										
5:30 PM										
5:45 PM										
6:00 PM										
6:15 PM										
6:30 PM										
6:45 PM										
7:00 PM										
7:15 PM										
7:30 PM										
7:45 PM										
8:00 PM										



9400 W Higgins Rd
Suite 305
Rosemont, IL 60018

EARLY BIRD Registration

Register by September 11 to receive exclusive discounts on the Annual Meeting & each Pre-Meeting Registration.

Register ONLINE Before OCTOBER 11

to Receive Email with Barcode for Express Badge Pick-Up

ONSITE Registration Hours

Tuesday: 4:00 PM – 6:00 PM
Wednesday - Friday: 6:30 AM – 5:00 PM
Saturday: 6:15 AM – 12:00 PM

REGISTER ONLINE TODAY
www.OTA.org

TUESDAY, OCTOBER 11, 2022

4:00 PM – 6:00 PM Conference Registration Open

WEDNESDAY, OCTOBER 12, 2022

7:15 AM – 6:00 PM Resident Comprehensive Fracture Course
7:30 AM – 4:45 PM International Trauma Care Forum
7:30 AM – 4:55 PM Basic Science Focus Forum
7:30 AM – 5:00 PM Boot Camp
7:30 AM – 5:00 PM Orthopaedic Trauma for PAs and NPs
8:00 AM – 4:00 PM Educate the Educators—OTA Faculty Development Course
9:00 AM – 4:00 PM E/M & Surgical Coding Course
5:00 PM – 8:00 PM OTA Member Fireside
5:00 PM – 8:00 PM Young Practitioners Forum—Preparing for YOUR Future

THURSDAY, OCTOBER 13, 2022

7:15 AM – 6:00 PM Resident Comprehensive Fracture Course, cont'd
8:00 AM – 5:15 PM Opening of the Annual Meeting Program
8:15 AM – 12:00 PM International Trauma Care Forum, cont'd
8:30 AM – 12:00 PM Basic Science Focus Forum, cont'd
8:30 AM – 12:00 PM Boot Camp, cont'd
8:30 AM – 12:00 PM Orthopaedic Trauma for PAs and NPs, cont'd

FRIDAY, OCTOBER 14, 2022

7:15 AM – 3:00 PM Resident Comprehensive Fracture Course, cont'd
8:00 AM – 5:00 PM **Annual Meeting Program, cont'd**

SATURDAY, OCTOBER 15, 2022

8:00 AM – 12:00 PM **Annual Meeting Program, cont'd**
8:00 AM – 12:00 PM Soft Tissue Coverage Skills Course
8:00 AM – 12:00 PM Pelvis and Acetabulum Course