



ORTHOPAEDIC  
— TRAUMA —  
ASSOCIATION



PROFESSION ■  
ASSOCIATION ■  
PASSION ■  
LEGACY ■

Generosity, foresight,  
strategic thinking,  
and impact  
are at the heart of a  
planned gift to the  
Orthopaedic Trauma  
Association

The OTA's success in achieving our mission is directly linked to the strength, collaborative efforts and support of the OTA membership and our patients. Help continue the OTA long-time tradition of excellence in orthopaedic trauma research and education through support of our initiatives.

## WAYS TO SUPPORT THE OTA

**WHAT INSPIRES YOU?** Promoting excellence in care for the injured patient, providing scientific forums, supporting musculoskeletal research and education, or helping OTA become the leading authoritative source for the optimum treatment and prevention of musculoskeletal injury? Where would you really like to make a difference and where would you like your impact to be felt?

In contemplating the answers to these questions, you may discover new goals or motivations that go beyond past giving practices to open new opportunities. With a planned giving strategy tailored to meet your needs, you can put your assets to work for OTA while you and OTA share in the benefits. Benefits such as:

- The chance for you and your family to leave a meaningful legacy
- A secure income stream for you or a loved one
- Savings on your income and estate taxes
- Naming opportunities
- Securing a solid financial future for OTA research and education
- The satisfaction of advancing the OTA's mission and vision

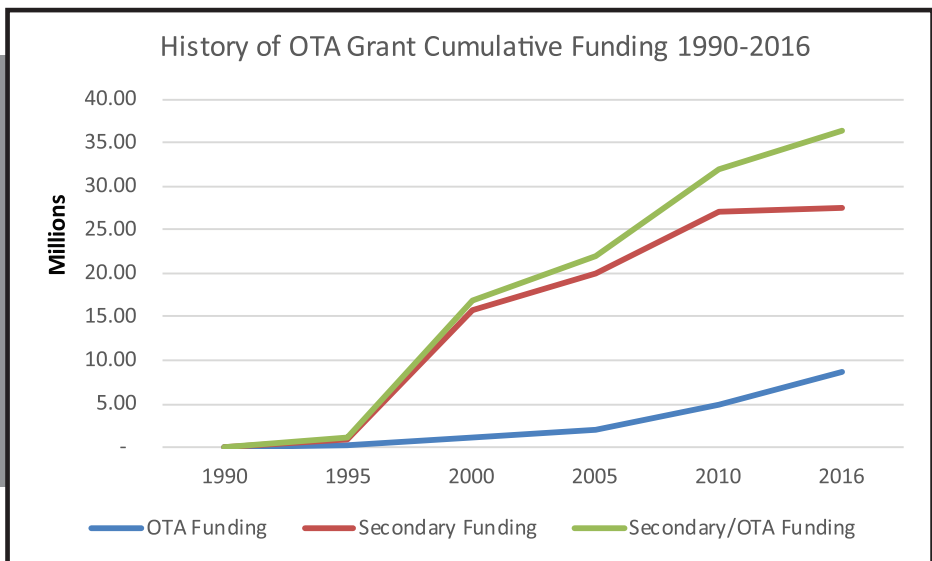
# THE IMPACT OF YOUR GIFT

**RESEARCH** Contributions impact OTA's continued ability to fund trauma-related research projects with an end goal of advancing treatment and prevention of musculoskeletal injury. From 1990 to 2016 OTA awarded 348 research grants, totaling over 8.5 million dollars, resulting in over 420 presentations, over 165 publications and over 27.5 million dollars of additional grant awards to studies that began as OTA funded research studies.

Due to generous Research Support, OTA can continue:

- Generating interest and educating young traumatologists to prepare for careers in research
- Preparing researchers to compete for higher level funding
- Offering a steady growth of high quality portfolio research projects

The chart below depicts the level of secondary funding awarded to research investigators who began studies with an OTA research grant award.



## EDUCATION

OTA educational meetings and courses are developed and taught by some of the most highly regarded North American and International orthopaedic trauma surgeons and reach trauma surgeons at every stage of their career.

OTA is dedicated to promoting excellence in care to the injured trauma patient by providing state-of-the-art education and support of orthopaedic trauma research, which would not be possible without the generous support of both individuals and industry.



*The OTA was able to establish an international research grant program as a result of the generous Legacy ICON donation made by  
**Toney and Gina Russell***



## WAYS TO GIVE TO OTA NOW

- **Monetary Contribution**
- **Appreciated Securities**  
(stocks, bonds, mutual funds, etc.)
- **Real Estate**
- **Charitable IRA Rollover**
- **Life Insurance**

## GIFTS THAT PAY INCOME

*A life income gift has many benefits: dependable income for you and your family, current and future tax savings, and a means to support OTA.*

- **Charitable Gift Annuity**
- **Charitable Remainder Trusts**
- **Charitable Lead Trust**
- **Donor Advised Funds**

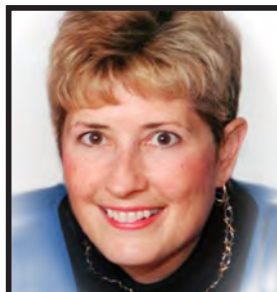
## GIFTS LATER

- Bequest
- Retirement Plan Assets
- Life Insurance
- Bank or Investment Account

### Kathy Cramer, MD

*The Kathy Cramer Memorial Scholarship, and the Kathy Cramer Women in Orthopaedic Trauma Luncheon, were established in memory of her many contributions and her leadership.*

*The OTA gratefully acknowledges her bequest, which continues to support these programs.*



## NAMING OPPORTUNITIES

The OTA accepts donations in honor and memory of members, colleagues, friends, and family (e.g. in memoriam). Such memorial donations shall be noted in the current annual meeting program book, on the website, and all other places current year donations are recognized.

Honorary or memorial donations may be used for research, education, and/or humanitarian programs aligned with OTA programming and the OTA mission.

Named giving opportunities include:

- Endowment Giving
- Tribute Gifts
- Research Grants
- Scholarships
- Educational Courses
- Annual Meeting Events
- General Operations

## The Bigger Picture



# WHY I SUPPORT THE OTA

*I've been a member of OTA for nearly 20 years. OTA continues to provide essential and meaningful benefits to me as an Orthopaedic Traumatologist offering significant educational and research opportunities as well as advocating policy affairs for the needs of orthopaedic patients. OTA encourages its members to begin research, which often blooms into bigger orthopaedic trauma research. OTA also offers stellar educational meetings and courses for trauma surgeons.*



**Kyle Jeray, MD**

*I am an OTA Legacy Society Member and support OTA because I believe in its mission and the future of Orthopaedic Traumatologists. Please help us to continue a tradition of orthopaedic trauma excellence by including OTA in your planned giving and supporting the future of orthopaedic traumatologists and the injured patient for generations to come.*





ORTHOPAEDIC  
—TRAUMA—  
ASSOCIATION

### **Mission Statement**

The mission of the OTA is to promote excellence in care for the injured patient through provision of scientific forums and support of musculoskeletal research and education of orthopaedic surgeons and the public.

### **Vision Statement**

The OTA will be the authoritative source for the optimum treatment and prevention of musculoskeletal injury, will effectively communicate this information to the orthopaedic and medical community and will seek to influence health care policy that affect care and prevention of injury.

### **Value Statement**

The OTA is adaptable, forward thinking, and fiscally responsible and is composed of a diverse world-wide membership who provide care and improve the knowledge base for the treatment of injured patients. OTA members provide worldwide leadership through education, research, and patient advocacy.

**For further information contact OTA**

**Phone 847-698-1631**

**9400 W. Higgins Road, Suite 305**

**Rosemont, Illinois 60018**

Please note that OTA is providing this information for your general education only. OTA is not providing you with legal, tax, or financial planning advice. You must work with a qualified professional adviser to determine how best to plan your own estate.

*Some gifts require Board of Directors' approval and must meet minimum requirements.*