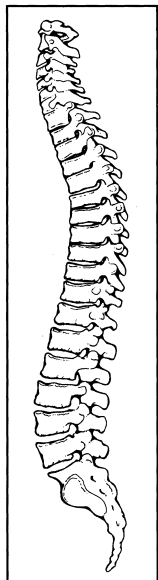


# SPINE

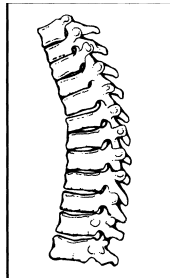
BONE: SPINE (5)



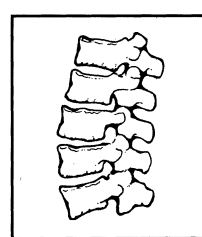
Location: Cervical (51)



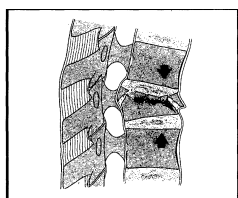
Location: Thoracic (52)



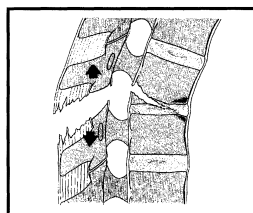
Location: Lumbar (53)



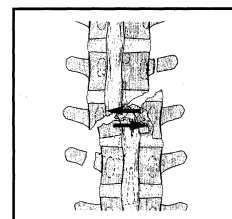
Types:  
A. Compression injuries of the body  
(compressive forces) (5\_-A)



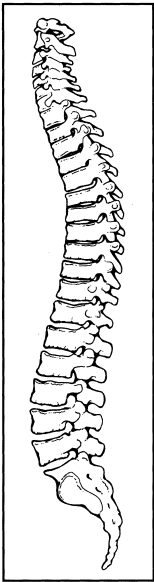
B. Distraction injuries of the anterior  
and posterior elements (tensile forces)  
(5\_-B)



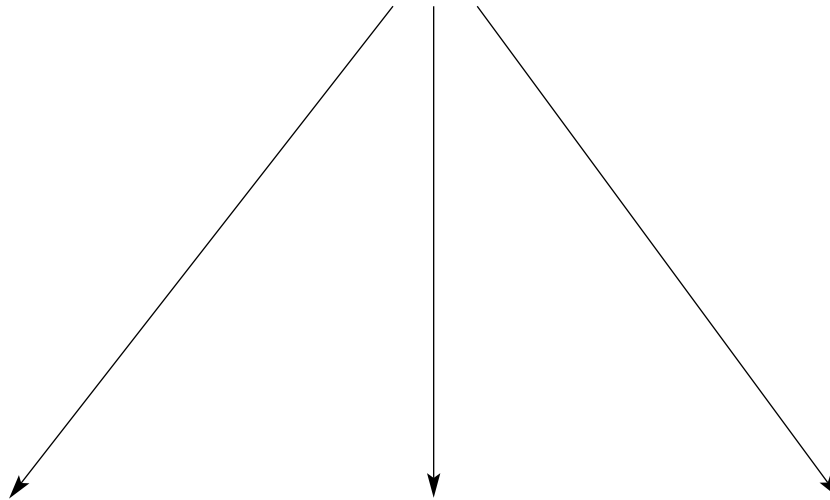
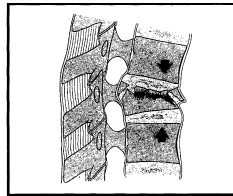
C. Multidirectional injuries  
with translation affecting the  
anterior and posterior ele-  
ments (axial torque causing  
rotation injuries) (5\_-C)



**BONE: SPINE (5)**



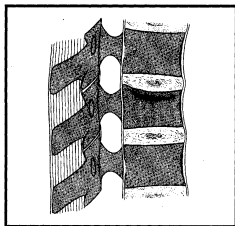
**Types:**  
**A. Compression injuries of the body (compressive forces) (5\_-A)**



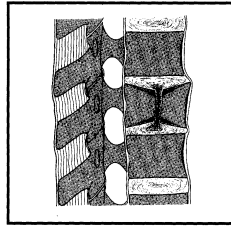
**Groups:**

Vertebral body compression type (5\_-A)

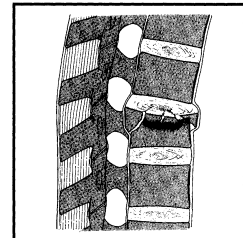
**1. Impaction fractures (5\_-A1)**



**2. Split fractures (5\_-A2)**



**3. Burst fractures (5\_-A3)**



**Subgroups and Qualifications:**

Vertebral body compression fractures, impaction injury (5\_-A1)

1. End plate impaction (5\_-A1.1)
2. Wedge impaction (5\_-A1.2)
3. Vertebral body collapse (5\_-A1.3)

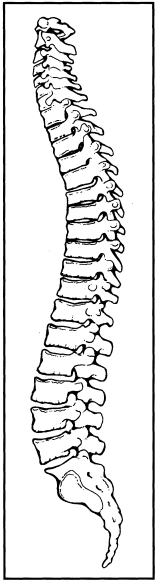
Vertebral body compression fractures, split (5\_-A2)

1. Sagittal (5\_-A2.1)
2. Coronal (5\_-A2.2)
3. Pincer (5\_-A2.3)

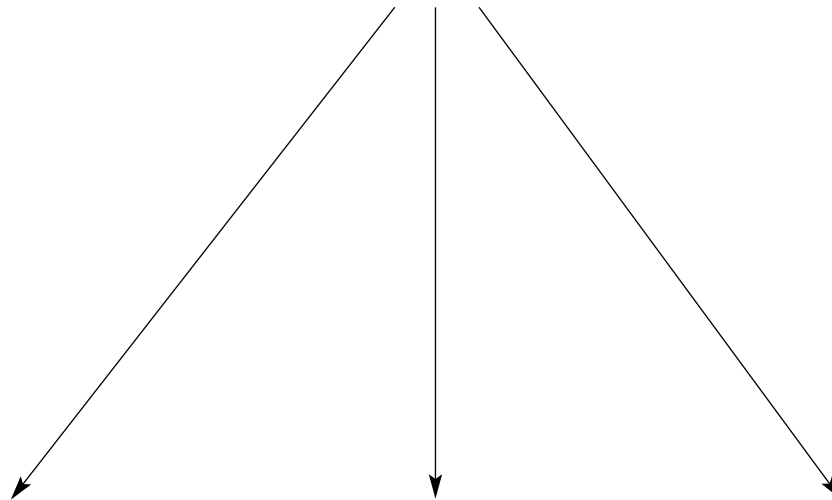
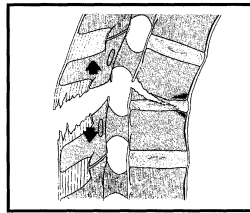
Vertebral body compression burst fractures (5\_-A3)

1. Incomplete burst (5\_-A3.1)
2. Burst-split (5\_-A3.2)
3. Complete burst (5\_-A3.3)

**BONE: SPINE (5)**



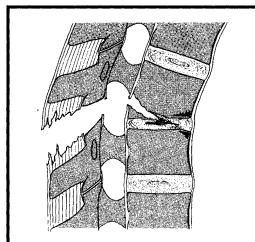
**B. Distraction injuries of the anterior and posterior elements (tensile forces) (5\_-B)**



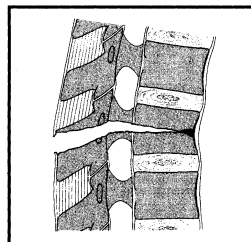
**Groups:**

Anterior or posterior element injury with distraction (5\_-B)

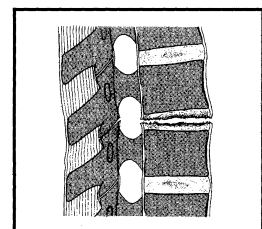
**1. Posterior disruption predominantly ligamentous (flexion-distraction injury) (5\_-B1)**



**2. Posterior disruption predominantly osseous (flexion-distraction injury) (5\_-B2)**



**3. Anterior disruption through the disc (hyperextension-shear injury) (5\_-B3)**



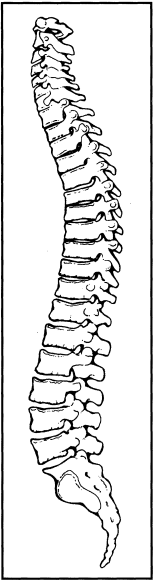
**Subgroups and Qualifications:**

Posterior disruption ligamentous (5\_-B1)  
 1. With transverse disruption of the disc (5\_-B1.1)  
 2. Vertebral body compression fracture (5\_-B1.2)

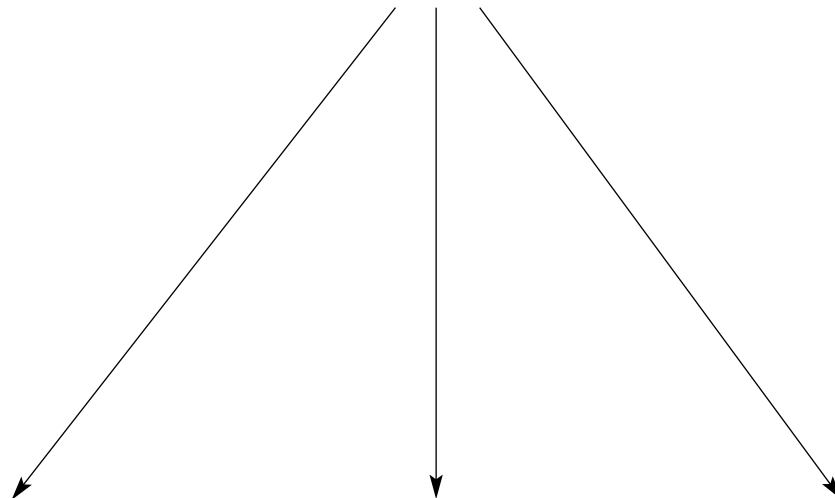
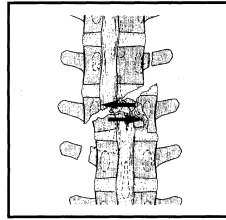
Posterior disruption osseous (5\_-B2)  
 1. Transverse bicolonn fracture (5\_-B2.1)  
 2. With transverse disruption of the disc (5\_-B2.2)  
 3. With vertebral body compression (5\_-B2.3)

Anterior disruption through the disc (5\_-B3)  
 1. Hyperextension-subluxation (5\_-B3.1)  
 2. Hyperextension-spondylolysis (5\_-B3.2)  
 3. Posterior dislocation (5\_-B3.3)

**BONE: SPINE (5)**



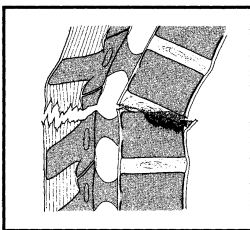
**C. Multidirectional injuries with translation affecting the anterior and posterior elements (axial torque causing rotation injuries) (5\_-C)**



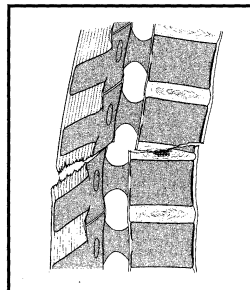
**Groups:**

Anterior or posterior element injury with rotation (5\_-C)

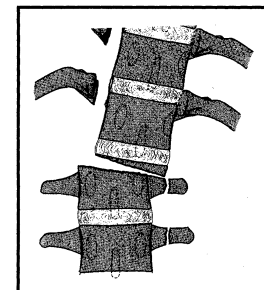
**1. Rotational wedge, split, and burst fractures (5\_-C1)**



**2. Flexion subluxation with rotation (5\_-C2)**



**3. Rotational shear injuries (Holdsworth slice rotation fracture) (5\_-C3)**



**Subgroups and Qualifications:**

Rotational wedge, split and burst fractures (5\_-C1)

- 1. Rotational wedge fractures (5\_-C1.1)
- 2. Rotational split fractures (5\_-C1.2)
- 3. Rotational burst fractures (5\_-C1.3)

Flexion subluxation with rotation (5\_-C2)

- 1. Flexion-distraction injuries with rotation (5\_-C2.1)
- 2. B2 with rotation (5\_-C2.2)
- 3. Hyperextension-shear-rotation of spine (5\_-C2.3)

Rotational shear injuries (5\_-C3)

- 1. Slice (5\_-C3.1)
- 2. Oblique (5\_-C3.2)