

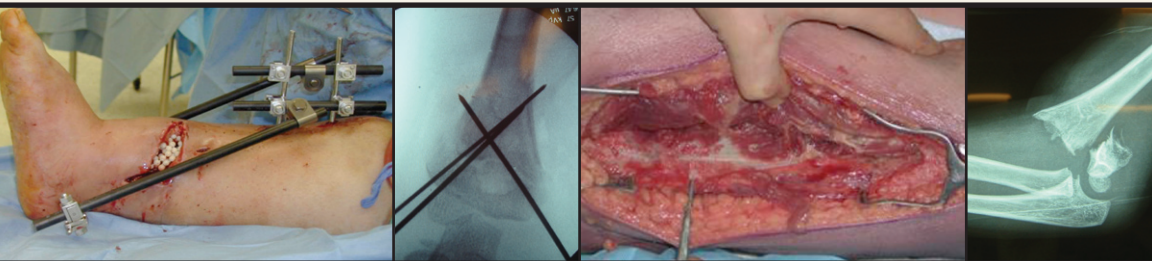
*November 2, 2013
Atlanta, Georgia*



©2010, Kevin C. Rose/AtlantaPhotos.com



Acute Orthopaedic Trauma Care Course



Phone: (847)698-1631
E-mail: ota@aaos.org • Web: www.ota.org



Atlanta Skyline © Loews Hotel

Dear Orthopaedic Surgeons and Surgical Care Teams:

The Orthopaedic Trauma Association (OTA) initiated a new course this past Spring titled, *Acute Orthopaedic Trauma Care Course (AOTCC)*. The post-course evaluations confirmed successful outcomes, and revealed much interest allowing the OTA to offer the course again this Fall.

The purpose of this one-day course is to provide up to date, practical information for orthopaedic surgeons and their dedicated care teams taking trauma call at level 1, 2, 3 and 4 trauma centers. The course is centered on topics of ongoing evolution for on-call surgeons, such as timing of open fracture management, emergent versus urgent operative cases, tips and tricks for efficient fracture care, and more.

Experienced OTA faculty members will present brief talks followed by interactive, case based discussions relevant to the challenges facing on-call surgeons in every setting.

This is a must-attend course for on-call surgeons, as this course is in particular aimed at assisting on-call orthopaedic surgeons to do the right things for their patients. Orthopaedic trauma care has changed greatly in the past years and our goal is to provide the practical details of current standards to our colleagues who are taking call throughout the USA.

Join us on Saturday, November 2, 2013 in Atlanta, Georgia at the Loews Hotel.
The course carries 6.6 CME credits.

Wade R. Smith, MD
AOTCC Chair

Philip R. Wolinsky, MD
AOTCC Chair

Bruce H. Ziran, MD
AOTCC Chair



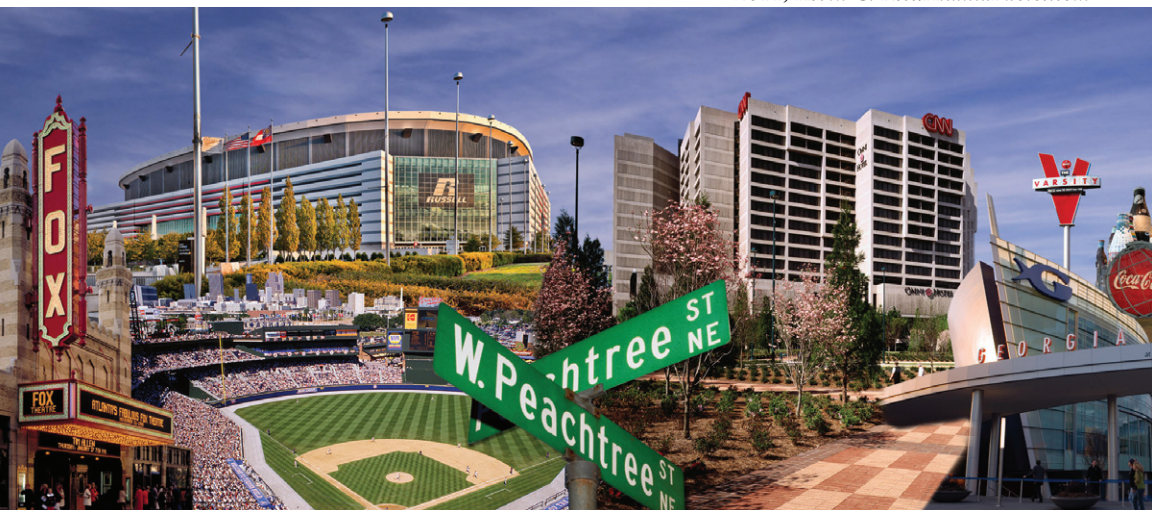
Acute Orthopaedic Trauma Care Course Saturday, November 2, 2013 – Atlanta, Georgia

7:00 – 7:50 am	Registration and Breakfast
7:50 – 8:00 am	INTRODUCTION <i>Philip R. Wolinsky, MD</i>
8:00 – 8:10 am	LECTURE Compartment Syndrome: Pathology, Diagnosis, and Treatment <i>William M. Reisman, MD</i>
8:10 – 8:30 am	CASE DISCUSSION TOPICS Single vs. Dual Incision With and Without Fractures; Soft Tissue Management <i>Philip R. Wolinsky, MD</i>
8:30 – 8:40 am	LECTURE Open Fractures Part I: The When? Evidence Driven Treatment in 2012 <i>Douglas W. Lundy, MD</i>
8:40 – 8:50 am	LECTURE Open Fractures Part II: The How? Wound Management <i>Ross K. Leighton, MD</i>
8:50 – 9:10 am	CASE DISCUSSION <i>Jason A. Lowe, MD</i>
9:10 – 9:25 am	LECTURE Provisional Stabilization and Damage Control <i>Bruce H. Ziran, MD</i>
9:25 – 9:40 am	CASE DISCUSSION <i>Jeffrey P. Garrett, MD</i>
9:40 – 10:00 am	Break
10:00 – 10:15 am	LECTURE Current Concepts / Tips and Tricks: Distal Radius <i>Philip R. Wolinsky, MD</i>
10:15 – 10:30 am	CASE DISCUSSION <i>William M. Reisman, MD</i>

Course limited to 50 participants - register today!

- 10:30 – 10:45 am **LECTURE**
What Is and Is Not a True Orthopaedic “Emergency” in Adults
Wade R. Smith, MD
- 10:45 – 11:15 am **CASE DISCUSSION**
Douglas W. Lundy, MD
- 11:15 am – 12:00 pm **LECTURE**
Current Concepts / Tips and Tricks: Proximal Humerus
Jeffrey P. Garrett, MD
- 12:00 – 12:20 pm **CASE DISCUSSION**
Jason A. Lowe, MD
- 12:20 – 1:00 pm Lunch – *Ravinia Room*
- 1:00 – 1:15 pm **LECTURE**
Current Concepts / Tips and Tricks: Hip Fractures
Jason A. Lowe, MD
- 1:15 – 1:45 pm **CASE DISCUSSION**
Ross K. Leighton, MD
- 1:45 – 2:00 pm **LECTURE**
Tips and Tricks for Nailing Femurs and Tibias
Bruce H. Ziran, MD
- 2:00 – 2:30 pm **CASE DISCUSSION**
Wade R. Smith, MD
- 2:30 – 2:45 pm **LECTURE**
Current Concepts / Tips and Tricks: Ankle Fractures
Jeffrey P. Garrett, MD
- 2:45 – 3:00 pm **CASE DISCUSSION**
William M. Reisman, MD
- 3:00 – 3:30 pm **OPEN DISCUSSION**
- 3:30 pm Adjourn

©2011, Kevin C. Rose/AtlantaPhotos.com



General Information

Course is limited to 50 participants, so early pre-registration is strongly recommended.



Course Location

Experience the very best at Loews Atlanta Hotel, located within walking distance of attractions, Piedmont Park, Atlanta's Central Park. Just 20 minutes from the Atlanta International Airport, in the heart of Midtown.

An upscale addition to the Midtown Atlanta restaurant scene, *Eleven* offers southern-inspired recipes to locals and visitors for an unbelievable dining experience. Gather at *Bar Eleven* for casual cocktails and light, modern fair.

Registration

Online: www.ota.org

Mail: Complete the enclosed registration form and send with payment to:

OTA
6664 Eagle Way
Chicago, IL 60678-1066 USA

Fax: Complete enclosed registration form along with credit card information and fax to: 847-823-0536.

Accommodations

The OTA has secured discounted room rates at the Loews Atlanta Hotel. Reservations should be made no later than **October 11, 2013**.

Rates:

Single/Double/King \$179.00 + tax

- **Book your hotel reservations through the 'Hotel Room Reservation Link'** on the OTA web site at www.ota.org.
- If you have any questions, contact the OTA office at (847)698-1631 or email: ota@aaos.org.

Hotel Information

Loews Atlanta Hotel

1065 Peachtree Street NE
Atlanta, USA 30309

Tel: 1 (404) 475-5000 Fax: 1 (404) 475-5731
1 (888) 563-9736 **Mention OTA Acute Care Group when calling for reservations.**

OTA Acute Orthopaedic Trauma Care Course
[hotel registration link](#)

(<http://www.loewshotels.com/en/Atlanta-Hotel/GroupPages/acute traumacare>).



Note: reservation ID OATC11

Air Transportation

Special meeting discounts available by calling **CorpTrav Management Group**, at 1-800-211-8016.

Service Fees:

Online Booking - \$15 USD

Booking with a professional travel agent (via phone or email) \$32 USD domestic.

In addition to your travel reservations, your service fee provides you with: 24/7/365 travel assistance with a live travel agent \$200,000 USD in flight insurance.

To book online go to <http://wcp.getthere.net/corptravonline>. You will be asked to create an account.

Site ID: aaos

Password Key: aaos1

If you need assistance when booking online please call 1-866-834-5678.

**Course registration and
hotel reservation link
at www.ota.org.**

*"Engaging presenters with visual aids, topics, and discussions were intriguing and relevant to my practice as a PA."
Spring Course Participant*



Register today at www.ota.org.

©2013, James Duckworth/AtlantaPhotos.com

While in Atlanta

The Loews Atlanta Hotel is located in charming and cosmopolitan Midtown. Deemed 'Atlanta's most walkable neighborhood,' the streets bustle with pedestrians around the clock enjoying the eclectic residential and commercial mix. Adventures in shopping include hip and highend retail from local merchants and major chains. Explore the enchanting cultural pursuits, amazing variety of the city's best restaurants and vast entertainment offerings.

The nearby Woodruff Arts Center is home to the Atlanta Symphony, the High Museum of Art, the Atlanta Ballet and the Alliance Theater. The historic Fox Theater, also located in Midtown, features concerts and touring Broadway productions.

Piedmont Park is a 189-acre oasis just two blocks from the hotel. Enjoy the Atlanta Botanical Gardens, two lakes, tennis courts and ballfields.

Local Transportation

Easy Atlanta Travel

By Subway:

Metropolitan Atlanta Rapid Transit Authority

(MARTA) train system, has connections between the airport and Downtown, Midtown, Buckhead and the Perimeter for easy Atlanta travel. The closest station to the hotel is the Midtown stop just two blocks away. The fare is \$2.50 each way, and passengers must purchase the Breeze Card from station vending machines to ride. Multi-trip passes, as well as seven- to 30-day passes are also available.

By Taxi:

Taxi rides are charged at a flat rate of \$5 for one passenger and \$1 each additional passenger; otherwise, fares are meter-based. The fare to and from the airport from the hotel is a flat rate of \$32, plus \$2 for each additional passenger. Plan an easy Atlanta trip with Loews.

Parking:

For your convenience, Loews Atlanta Hotel offers both valet and self-parking options based upon availability. With many public transit options within walking distance, along with local businesses and attractions, *you will rarely even need your car.*

- Self parking rate \$22
- Valet parking rate: \$32

*"Excellent level of expertise and combination of evidence based
complemented by common sense approach."
Spring Course Participant*

Orthopaedic Trauma Association's Acute Orthopaedic Trauma Care Course November 2, 2013 • Atlanta, Georgia, USA

REGISTRATION FORM

**Registration fee includes breakfast, lunch and electronic syllabus.*

Course limited to 50 participants. Register Early!

Please type or print
Register on-site after October 31, 2013

Name _____

Address _____

City _____ State _____ Zip _____

Phone () _____ Fax () _____

E-mail _____

	<u>Member</u>	<u>Allied Health</u>	<u>Industry Reps</u>	
Early Bird Registration Fee: (If received <i>before</i> October 10)	\$400	\$400	\$500	\$ _____
After Early Bird Registration Fee: (If received <i>after</i> October 10)	\$450	\$450	\$550	\$ _____
On-site Registration Fee: (<i>After</i> October 31, 2013)	\$500	\$500	\$600	\$ _____

Amount Enclosed \$ _____

Payment:

Cash
 Check
 Visa
 Mastercard
 AMEX

Cardholders Name: _____

Card Number:

--	--	--	--	--	--	--	--	--	--	--	--	--	--	--	--	--	--	--	--

Exp. Date: _____ Signature: _____

Credit card registrations may be faxed to 847-823-0536.

- Contact OTA if ADA (Americans with Disabilities Act) accommodations are desired.

Refund Policy: Written notice of cancellation must be received on or before October 1, 2013 for a full refund.

NO REFUNDS AFTER OCTOBER 1, 2013

Allow two weeks for registration confirmation. Questions: (847) 698-1631

Return completed registration form and check in U.S. funds (postmarked by October 9) to:

OTA 6664 Eagle Way
Chicago, IL 60678-1066 USA

Credit card registrations may be faxed to: (847) 823-0536



6300 N. River Road, Suite 727
Rosemont, IL 60018-4226 USA

Invited Faculty



Jeffrey P. Garrett, MD
Resurgens Orthopaedics
Marietta, GA



Jason A. Lowe, MD
University of Alabama
Birmingham, AL



William M. Reisman, MD
Emory Orthopaedic Trauma & Fracture Care
Atlanta, GA



Philip R. Wolinsky, MD*
Univ. of California – Davis Medical Center
Sacramento, CA



Ross K. Leighton, MD
Halifax Infirmary
Halifax, NS



Douglas W. Lundy, MD
Resurgens Orthopaedics
Marietta, GA



Wade R. Smith, MD*
Mountain Orthopaedic Trauma Surgeons
Englewood, CO



Bruce H. Ziran, MD*
Atlanta Medical Center
Atlanta, GA

**Course Chairs*