

Masters Level Trauma Coding Course

Wednesday, October 9, 2013

**Margaret Maley, BSN, MS, Senior Consultant,
KarenZupko & Associates, Inc.**

J. Scott Broderick, MD, Course Chair

Attendees of this activity can earn up to

6 AMA PRA Category 1 Credits™

Course Description

Margaret Maley from KarenZupko & Associates, Inc. is back with a course you can't afford to miss! Take this opportunity to attend a coding and reimbursement course designed specifically for orthopaedic trauma surgeons and their staff. The increased focus on documentation audits and looming implementation of ICD-10 makes this a course you must attend.

Do you or your staff question:

- How the documentation of a level 3 new patient visit or outpatient consultation is different from a level 4?
- Could our group pass an audit of E&M services?
- What is medical necessity and how do I communicate it to the payer?
- What do I report if the resident sees the patient in the ER and I see him in the hospital the following day before surgery?
- How do I report debridements of an open fracture done on different days?
- What will I need to change in my description of fractures for ICD-10 implementation?
- Should we use a modifier 59 on this case?

Learning Objectives

Upon successful completion of the Evaluation and Management (E&M) Section, participants will be able to:

- Confidently report services in the ER that result in a hospital admission
- Know what modifier is required if you see a patient in the ER and take them urgently to the operating room
- Describe and document open fractures using the Gustilo Classification for ICD-10 diagnosis reporting
- Accurately document the level of service for your typical patient in the emergency room or office

Upon successful completion of the orthopaedic trauma procedural coding section, participants will be able to:

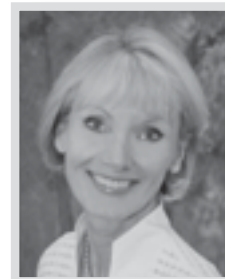
- Discuss what is included in global fracture care
- Describe how using a specific modifier can impact reimbursement
- Accurately report the application of external fixation, fracture debridement versus wound debridement, and the care of multiple fractures in the same session
- Correctly document and report subsequent procedures done during the "global period"
- Identify the difference between returning a patient to the operating room to treat a complication versus returning for an anticipated surgical procedure
- Report the services of surgical assistants and PA's.

About the Speaker

Margaret Maley brings 30 years of orthopaedic experience to her clients working with KarenZupko & Associates as a consultant and speaker for 17 years. With a B.S.N. from The University of Illinois and Master's degree from Rush University, Ms. Maley began her career in Chicago as a clinical nurse specialist managing several FDA studies. Moving to Houston in 1986, she transitioned to the business side of medicine.

"Front-line" experience managing orthopaedic practices gives her unique insight into the challenges facing orthopaedic surgeons and their staff on a daily basis. She is acutely aware of the importance of correct coding and accurate documentation for proper reimbursement and to minimize the risk of audit. She is recognized by her peers as a skilled communicator and for being able to sort out difficult orthopaedic coding and reimbursement issues. Ms. Maley's fast paced humorous presentations make her a favorite of surgeons, administrators and staff.

Margaret has extensive experience working with private practices and academic orthopaedic departments, state orthopaedic societies, and as a featured speaker for national organizations like the American Academy of Orthopaedic Surgeons, the Musculoskeletal Tumor Society, the American Association of Hip and Knee Surgeons, the Western Orthopaedic Association, the Gait and Clinical Movement Analysis Society, and the Pediatric Orthopaedic Society of North America.



Course Agenda

- 8:00 am **Registration**
- 9:00 am – 12:00 pm **Evaluation and Management**
 - **Level of Service documentation**
 - History, Exam, Medical Decision Making
 - Can time be used to report a level of service?
 - **Category of service**
 - **What is the Global Surgical Package and the Global Period**
 - **Procedures done with E&M services (such as injections or cast applications)**
 - **Unrelated E&M services in the Global Period**
 - **ICD-10 coding and documentation for fractures**
- 12:00 pm – 1:00 pm **Lunch**
- 1:00 pm – 4:00 pm **Fracture Care Surgical Coding**
 - **Unrelated Procedures (modifier 79)**
 - **Staged Procedures (modifier 58)**
 - Complicated Fractures
 - Debridements
 - **Treatment of Complications (modifier 78)**
 - When is it a complication and how is it reported?
 - **Using modifier 51 versus modifier 59**
 - **Unusual service (modifier 22)**
 - **Reporting unlisted procedures**